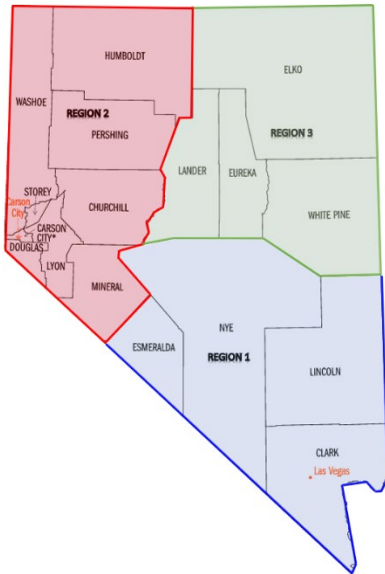




## NEVADA OPERATIONS CENTER (NVOC) SITREP

NEVADA REGION MAP



**INCIDENT NAME:** Spring Thaw 2023

**LOCATION:** Nevada (Region 2)

**TIME OF INCIDENT:** 12:00 AM on 8MAR23

**INCIDENT DESCRIPTION:** The Nevada Operations Center (NVOC) is partially activated per the Division of Emergency Management (DEM) Spring Thaw Plan. The purpose of this activation is to increase our efforts for monitoring, preparedness, and supporting any jurisdictions in responding to flooding impacts.

**SITREP #:** 11

**SOURCE:** Nevada Division of Emergency Management (DEM), Bureau of Indian Affairs (BIA), Walker River Irrigation District (WRID), NV Energy, Nevada Department of Wildlife (NDOW), Lyon County Office of Emergency Management, and National Weather Service (NWS) Reno

## CONDITIONS

**CURRENT SITUATION** (as of 12:00 PM on 06JUL23): Per the National Weather Service Reno, no major heat waves for the next 7-10 days. Temperatures remain more typical for Summer this week with a bit higher temperatures mid to late next week. No thunderstorm risks except to the far Northwest region. High and cold flows continue on area waterways as the snowpack melts off; however, the snowmelt is losing momentum. Localized minor flooding continues to impact the region. Greatest concern remains at the Walker River and Eastern Sierra streams. All flood gauges: The Walker River near Wabuska is at minor flood stage. Walker River near Mason-Snyder Lane, East Walker River above Strosnider Ditch and Walker River below Weber Reservoir near Schurz are at near flood stage currently.

## RESERVOIR CAPACITY LEVELS

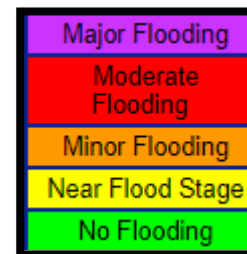
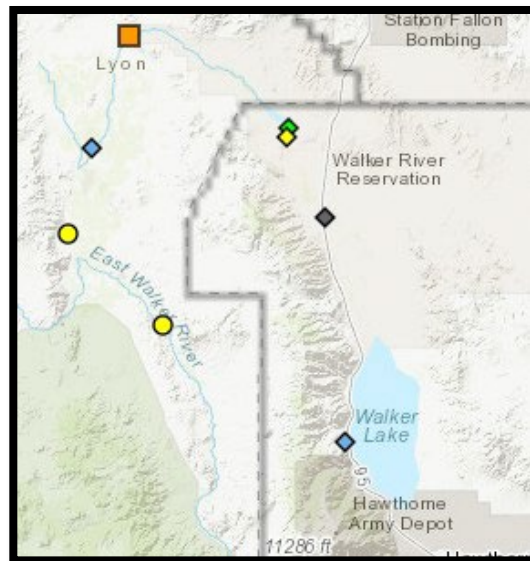
Bridgeport	54%
Topaz	64%
Weber	58%

Spring Thaw 2023 Declarations	
Churchill County 3/6	Fallon Paiute-Shoshone Tribe 4/7
Lincoln County 4/12	Lander County 4/27
Humboldt County 5/1	Lyon County 5/18
State Declaration 5/29	Yerington Paiute Tribe 5/25
Walker River Paiute Tribe 5/30	



## Nevada Division of Emergency Management / Homeland Security

Prevent • Protect • Mitigate • Respond • Recover



### SIGNIFICANT IMPACTS

1. **Mason Road is SR 827:** the Mason Bridge and roadway are state property and remain closed with HESCO Barriers across them to redirect water from the Walker River away from town. There is damage to the roadway that NDOT will repair after the water subsides. **This will be a financial impact to the state.**
  - No new reports as of 7/6/2023
2. **Miller Lane** is still closed with water over the roadway and is expected to a be total loss due to water damage by the Mason Valley Wildlife Management Area (MVWMA).
  - No new reports as of 7/6/2023
3. **Lux Lane** Water is receding on Lux Ln. south. They hope to get materials and equipment out there to regain access to homes and get fish out to lakes. **\*\*We received an estimate to fix a small area of state road to MVWMA, \$758,000 and is attached as PDF 1517\_001.**
4. **MVWMA:** NDOW still has 3 families that are displaced. **Any emergency protective measures will be the responsibility of the state.**
5. **NV Energy Churchill Station** is confident that the usage of a high clearance vehicle from the NETC will allow them to access the pump house if they need to get out there.
6. **Rail Road:** There is increased Subbing in this area and there is concern of impacts to the railroad tracks out of Hawthorne Army Depot.
  - No new reports as of 7/6/2023
7. **Weber Reservoir:** BIA and WRPT reports a canal downstream of Schurz has blown out, and a family was concerned that lives near the area of concern and evacuated to Dayton. BIA reported



## Nevada Division of Emergency Management / Homeland Security

Prevent • Protect • Mitigate • Respond • Recover

the canal location showed some cracks in the banks. Repairs are being made but it is holding as it is.

ACTIONS and NEEDS	
Jurisdictions	
Region	Location
Region 2 – Western Nevada	<p><b>Lyon County –</b></p> <ul style="list-style-type: none"> <li>Erosion on Lux Lane culvert, working with partners to ensure access to power plant</li> <li>Water on S. Lux Lane is receding—undergoing temporary repairs</li> <li>Miller Lane closed</li> <li>Mason Road Bridge closed</li> <li>Monitoring forecasts on Walker River system. After next week river forecast, EOC may decrease to a level 3 monitoring status</li> <li>Monitoring waters at Lahontan Street at Silver Springs</li> <li>Building department to inspect four homes at Mason Road to get residents back into their homes</li> <li>Meeting with NDOT to discuss Mason road re-opening plans</li> </ul> <p><b>BIA –</b> <a href="https://www.bia.gov/WeberDamResponse">https://www.bia.gov/WeberDamResponse</a></p> <ul style="list-style-type: none"> <li>Response Level 1 Activation</li> <li>Camera is in place on the dam giving access to engineers (updates every 10 minutes)</li> <li>Spillway continues to work effectively</li> <li>Fuse plug has been removed; RipRap installed, 100 Supersack bags filled and staged onsite</li> <li>Water levels at Weber Dam estimated to remain below emergency spillway</li> <li>36" rock continues to be delivered to emergency spillway channel to construct trench with the construction of another trench planned</li> <li>Crack at canal at Schurz is being filled-no major concerns</li> <li>Weber Reservoir and roads leading to it are closed</li> </ul> <p><b>WRID –</b></p> <ul style="list-style-type: none"> <li>Topaz at 38,310 AF - 64% capacity</li> <li>Bridgeport at 22,870 AF - 54% capacity</li> <li>Flows have leveled off, increased water to reservoir and will store for the next couple weeks</li> <li>Will match inflow/outflow when flows increase again</li> <li>Plan to keep static at mainstem of Walker at 2200-2400 CFS at Snyder gauge</li> </ul>



## Nevada Division of Emergency Management / Homeland Security

Prevent • Protect • Mitigate • Respond • Recover

	<p><b>NV Energy –</b></p> <ul style="list-style-type: none"> <li>• Water on access road to cooling pumps that supply Fort Churchill Generating Station is receding</li> <li>• Feel confident high clearance vehicle on site can manage getting crews out to the pump house if needed</li> <li>• Waiting for water to recede some more to get to pumphouse 2 and make repairs</li> </ul> <p><b>NDOW –</b></p> <ul style="list-style-type: none"> <li>• All routes in and out of Mason Valley Wildlife Area and Hatchery are affected by flooding; families and employees evacuated from the area</li> <li>• North Pond receding slightly</li> <li>• Possible lead on temporary housing for staff from Mason Valley Wildlife Area</li> <li>• Will be airlifting fish feed to hatchery and will need to get fish off station and into settling ponds</li> <li>• Three families still displaced</li> <li>• Planning for construction and material placement at Luxe Lane to get families back in homes and to get fish off station</li> </ul> <p><b>Walker River Paiute Tribe –</b></p> <ul style="list-style-type: none"> <li>• Erosion South of Schurz caused one homeowner evacuation</li> <li>• In contact with NV Energy for power pole located near high river banks</li> <li>• Monitoring high river banks</li> </ul>
--	--

State Response	
ESF 1 Transportation	<ul style="list-style-type: none"> <li>• NSTR</li> </ul>
ESF 6 Mass Care	<ul style="list-style-type: none"> <li>• NSTR</li> </ul>
ESF 12 Energy	<ul style="list-style-type: none"> <li>• NSTR</li> </ul>
ESF 15 External Affairs	<ul style="list-style-type: none"> <li>• Monitoring social media; working on flood thank you posts for jurisdictions; monitoring rumor control</li> </ul>
Tribal Liaison	<ul style="list-style-type: none"> <li>• Monitoring and available for support</li> </ul>
AFN Liaison	<ul style="list-style-type: none"> <li>• Available to coordinate and support operations</li> </ul>
FEMA Liaison	<ul style="list-style-type: none"> <li>• Reporting information to Region IX</li> </ul>
USACE Liaison	<ul style="list-style-type: none"> <li>• Supporting virtually</li> </ul>
PDA Team	<ul style="list-style-type: none"> <li>• \$1.9 million in damages on PDA tool</li> </ul>

### AVAILABLE RESOURCES *(see below)*

Division of Emergency Management



## Nevada Division of Emergency Management / Homeland Security

Prevent • Protect • Mitigate • Respond • Recover

Resource	Number
Sandbags	5,000
HESCO Barriers	20 pallets in Carson City, 26 in Eureka
Sandbag Fillers	0 (possible to move this resource from another region if needed)
Express Sandbaggers	5

### COSTS

#### Division of Emergency Management

Total \$27,656.31

DEM reminds all jurisdictions and partners to maintain their 214 activity logs for tracking personnel costs, and any costs for repairs and emergency protective measures to the flood event.

Please use Survey123 for documenting Public Assistance Damage categories (if you need access or assistance, please reach out to [disaster-recovery@dem.nv.gov](mailto:disaster-recovery@dem.nv.gov)). All these costs will let us know if we are going to reach the threshold to declare a federal disaster for the Spring Thaw 2023 event.



### COMMENTS AND FOLLOW-UPS

LINKS: [https://dem.nv.gov/Resources/Flood\\_Information](https://dem.nv.gov/Resources/Flood_Information)

NEXT OPERATIONS CENTER BRIEF: 10 JUL 23 at 11:00 AM

DEM DUTY OFFICER: Sharon Luce (775) 687-0498